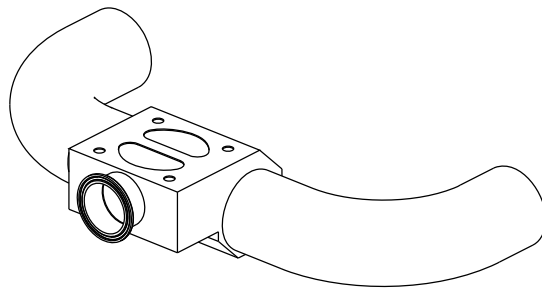
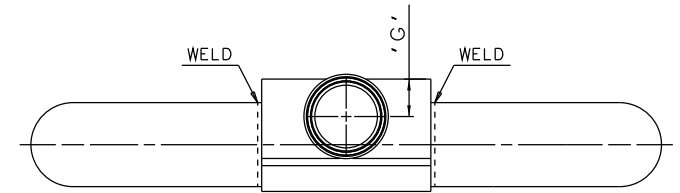
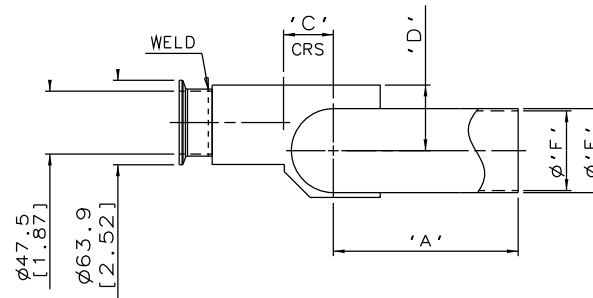
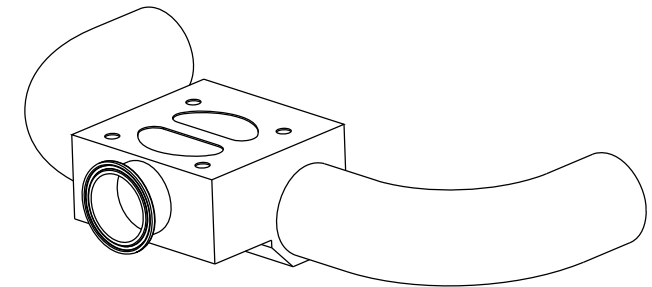
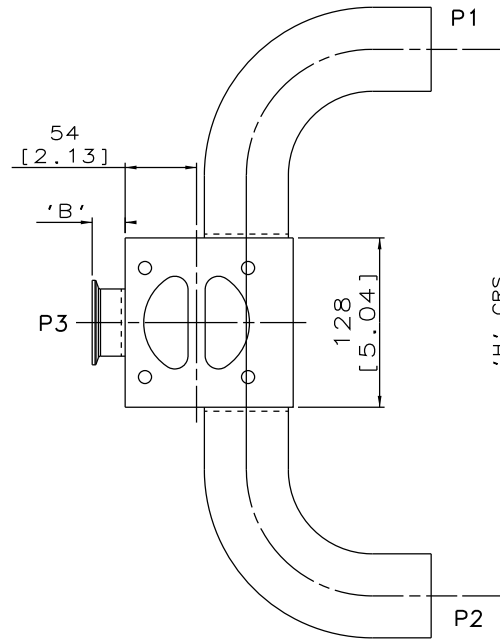


DN50/2.00
MAINLINE ONLY



DN80/3.00 TO DN100/4.00
MAINLINE ONLY



DN65/2.50
MAINLINE ONLY

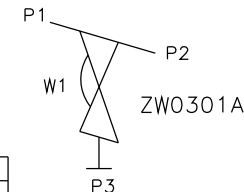
The information on this sheet is Private and Confidential and is the property of Crane Process Flow Technologies Limited and must not be published directly or indirectly in any manner whatsoever without the written permission of the Company and must not be used in any way detrimental to their interests.
© Crane Process Flow Technologies

CRANE Process Flow Technologies
A Crane Co. Company

Saunders
The Science Inside

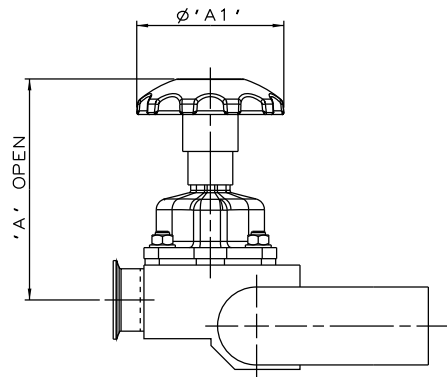
Title
SCHEDULE OF LEADING DIMENSIONS FOR DN50/2.00
WEIR POINT OF USE 'I' BODY COMPLETE WITH
MAINLINE : BUTT WELD OD TUBE ENDS
BRANCH : DN50/2.00 HYGIENIC CLAMP END

Drawn R1	Date 14.10.11	UNCONTROLLED IN HARD COPY FORMAT
Checked RND	Date 21.03.12	
First Angle Projection Method E	DO NOT SCALE	Drawing No. WEB-046
		Issue. 2

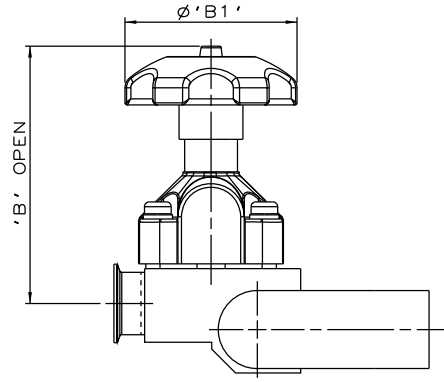


ORIENTATION AS
PER P&ID DIAGRAM
FOR OPTIMUM
DRAINABILITY.

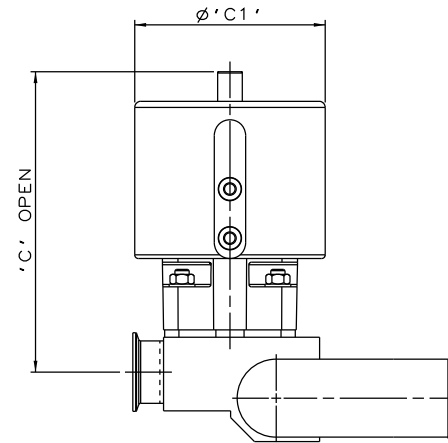
MAINLINE SIZE		A		B		C		D		øE		øF		G		H		BODY WEIGHT
mm	inch	mm	inch	mm	inch	mm	inch	mm	inch	mm	inch	mm	inch	mm	inch	mm	inch	Kgs
DN50	2.00	120.7	4.75	25.0	0.98	30.3	1.19	41.5	1.63	50.8	2.00	47.5	1.87	28.4	1.12	375.4	14.78	5.0
DN65	2.50	139.8	5.50	25.0	0.98	37.7	1.48	49.6	1.95	63.5	2.50	60.2	2.37	28.4	1.12	413.6	16.28	6.4
DN80	3.00	158.8	6.25	25.0	0.98	43.9	1.73	54.9	2.16	76.2	3.00	72.9	2.87	28.4	1.12	465.6	18.33	6.6
DN100	4.00	203.2	8.00	25.0	0.98	54.9	2.16	66.3	2.61	101.6	4.00	97.38	3.83	28.4	1.12	554.4	21.83	9.7



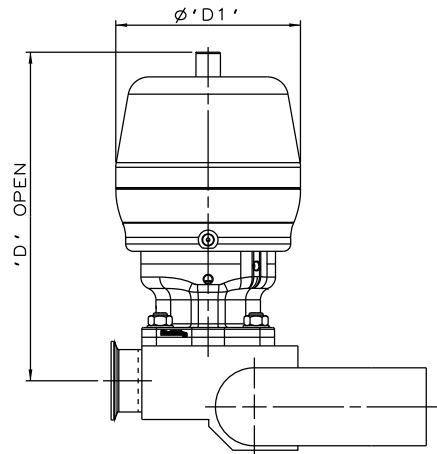
SS NON SEALED
BONNET ASSEMBLY



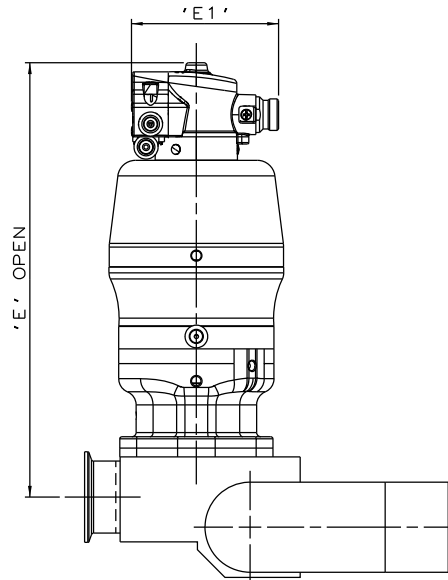
PES BONNET
ASSEMBLY



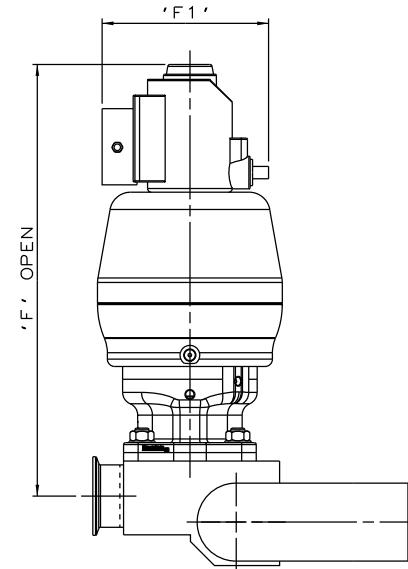
EC ACTUATOR
(ALL MODES)



*S360 ACTUATOR



*S360 ACTUATOR
WITH M-VUE SENSOR



*S360 ACTUATOR
WITH I-VUE SENSOR

The information on this sheet is Private and Confidential and is the property of Crane Process Flow Technologies Limited and must not be published directly or indirectly in any manner whatsoever without the written permission of the Company and must not be used in any way detrimental to their interests.
© Crane Process Flow Technologies

CRANE Process Flow Technologies
A Crane Co. Company

Saunders
The Science Inside

Title SCHEDULE OF LEADING DIMENSIONS FOR DN50/2.00
WEIR POINT OF USE 'T' BODY COMPLETE WITH
MAINLINE : BUTT WELD OD TUBE ENDS
BRANCH : DN50/2.00 HYGIENIC CLAMP END
FITTED WITH TOPWORKS OPTIONS

Drawn JRD Date 15.09.16

UNCONTROLLED IN
HARD COPY FORMAT

Checked RND Date 15.09.16

First Angle Projection DO NOT SCALE
Method E

Drawing No. WEB-046-ASSY Issue. 1

*DIMENSIONS SHOW MAXIMUM ENVELOPE FOR ALL MODES

MAINLINE SIZE	A		A1		B		B1		C		C1		D		D1		E		E1		F		F1		
	mm	inch	mm	inch	mm	inch	mm	inch	mm	inch	mm	inch	mm	inch	mm	inch	mm	inch	mm	inch	mm	inch	mm	inch	
DN50	2.00	180	7.09	120	4.72	209	8.23	140	5.51	244	9.60	155	6.10	267	10.51	150	5.90	315.4	12.42	103.8	4.09	351	13.82	135.5	5.33